

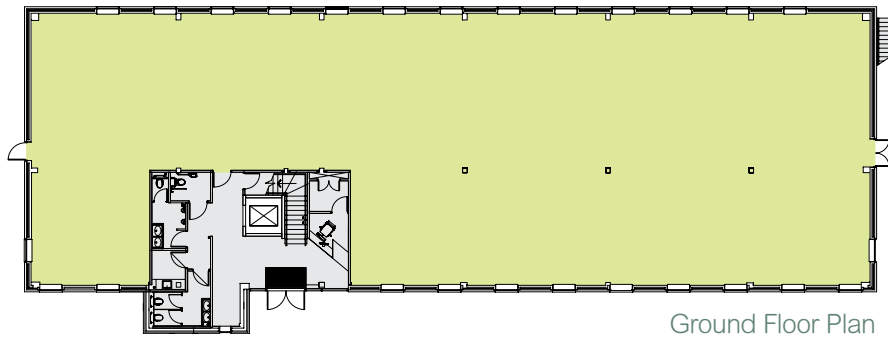
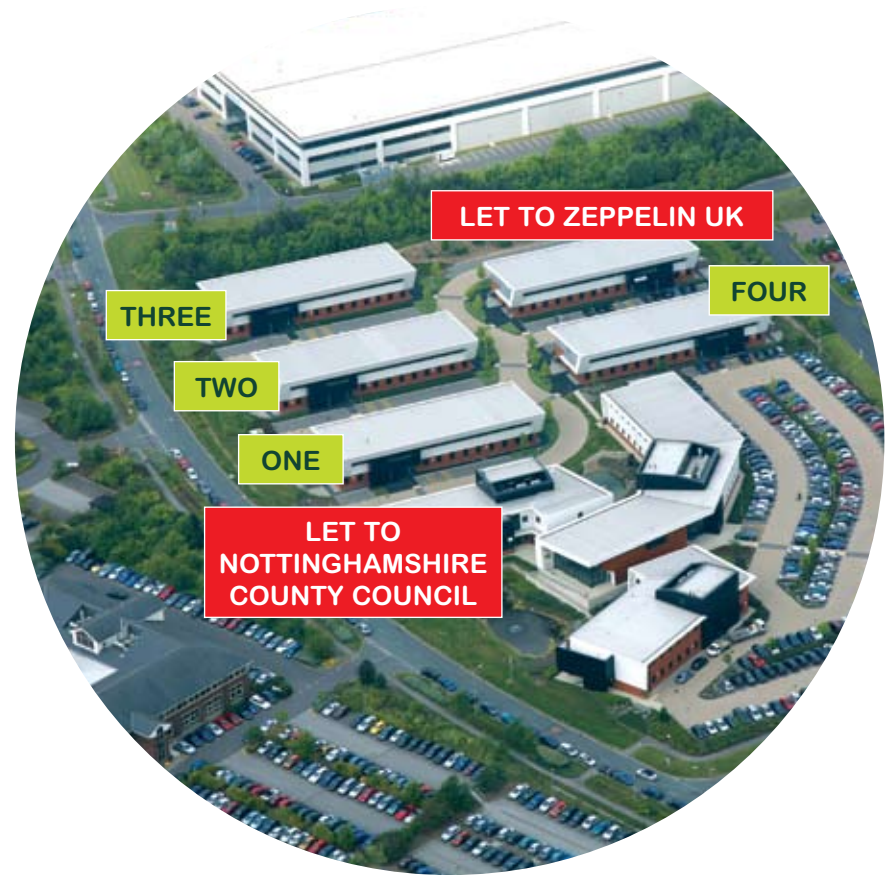
core²⁷
SHERWOOD PARK

MULTIFLEX HYBRID OFFICES TO LET

566 - 4,625 M² (6,091 - 49,783 FT²)

FIVE INDIVIDUAL UNITS

Accommodation on two levels providing an innovative independent solution for occupiers, with the ground floor provisionally left as multiflex space giving the unique opportunity to design occupation around your own requirements. Alternatively our clients would be happy to fit out to full office specification on both floors.



Ground Floor Plan

Multiflex ONE	First Floor	567 m ²	6,104 ft ²
47 Car Spaces	Ground Floor	589.4 m ²	6,345 ft ²
Total Net Internal		1,156.5 m²	12,449 ft²
Multiflex TWO	First Floor	567.7 m ²	6,111 ft ²
47 Car Spaces	Ground Floor	588.74 m ²	6,337 ft ²
Total Net Internal		1,156.4 m²	12,448 ft²
Multiflex THREE	First Floor	568.8 m ²	6,123 ft ²
48 Car Spaces	Ground Floor	590 m ²	6,352 ft ²
Total Net Internal		1,158.9 m²	12,475 ft²
Multiflex FOUR	First Floor	565.8 m ²	6,091 ft ²
47 Car Spaces	Ground Floor	587.1 m ²	6,320 ft ²
Total Net Internal		1,153 m²	12,411 ft²

Multiflex FIVE

LET TO ZEPPELIN UK LTD



Scott Rutherford
scott.rutherford@eur.cushmanwake.com

Marcus Hayes
marcus.hayes@eur.cushmanwake.com



Jonathan Bishop
jbishop@heb.co.uk

Robert Maxey
rmaxey@heb.co.uk

**Sat Nav Ref:
NG15 0DR**

Cushman & Wakefield and HEB for themselves and for vendors or lessors of this property, whose agents they are, gives notice that: 1/ The particulars are produced in good faith, but are a general guide only and do not constitute any part of a contract. 2/ No person in the employment of the agent(s) has any authority to make or give any representation or warranty whatsoever in relation to this property. 3/ The property is offered subject to contract and unless otherwise stated all rents are quoted exclusive of VAT. 4/ Nothing in these particulars should be deemed a statement that the property is in good condition, or that any services or facilities are in working order. 5/ Unless otherwise stated, no investigations have been made regarding pollution, or potential land, air or water contamination. Interested parties are advised to carry out their own investigations if required. Designed and produced by Core 0121 643 8151. October 2008. www.core-marketing.co.uk

www.core27.co.uk